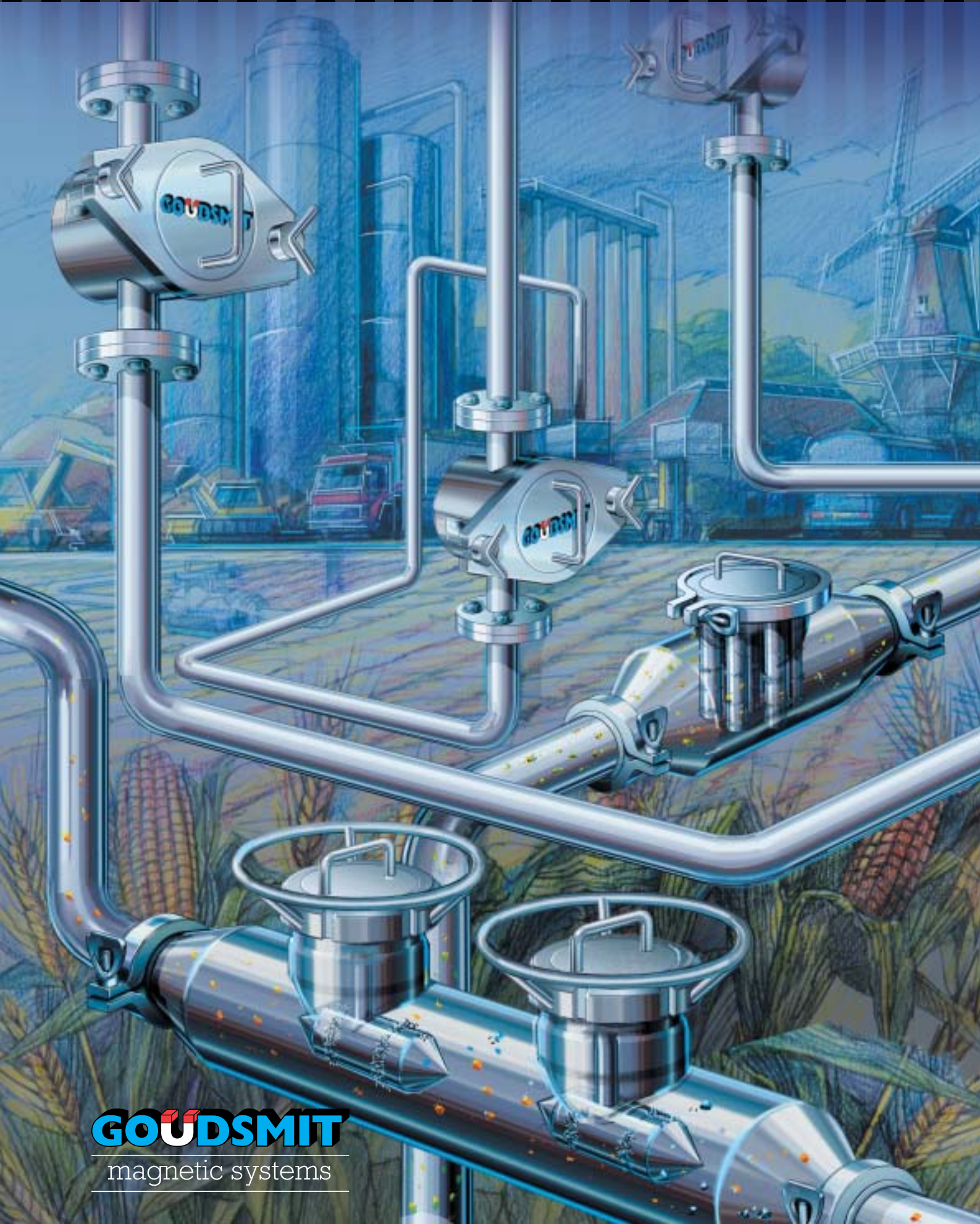


# M A G N E T I C F I L T E R S





Goudsmit magnetic filters are able to remove ferrous particles of only 30 microns in size from fluids and powders transported under pressure. The filters have a wide range of applications to suit the needs of each industrial sector, but the principle is always the same. The powerful Neoflux® magnetic bars penetrate deep into the product so that they retain even the smallest ferrous particles. The bars can be removed from the product flow for cleaning by lifting the lid. Various tests have confirmed that the powerful GSN 50 magnet can also catch stainless steel scrapings. These particles are so small that they would even escape a metal detector.

## CONTENT

**MAGNETIC BARS: BASIC MATERIALS FOR MAGNETIC FILTERS**

**INDUSTRIAL MAGNETIC FILTER: PRESSURE UNTIL 10 BAR**

**DOUBLE-WALLED INDUSTRIAL FILTER: FOR STICKY PRODUCTS**

**SANITARY MAGNETIC FILTER: PRESSURE UNTIL 5 BAR, CASING COMPLETELY SMOOTH**

**PHARMAFILTER - SELF-CLEANING MAGNETIC FILTER: PRESSURE UNTIL 7 BAR, CASING FULLY POLISHED**

**METAL DETECTION: FOR NON-MAGNETIC PARTICLES**

**Page 3**

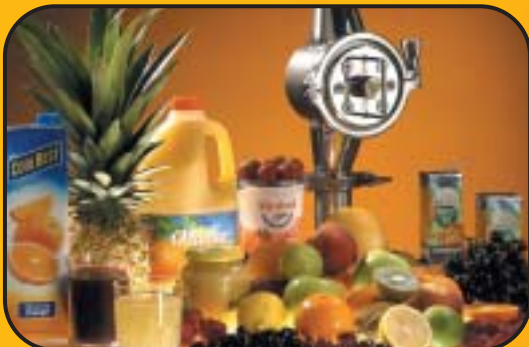
**Page 4**

**Page 5**

**Page 6**

**Page 7**

**Page 8**



# MAGNETIC BARS

Magnetic bars are the basic filter components.

Quality : Neoflux®

Dimensions : Ø 23, fully waterproof

Material : Stainless steel 316

Magnet material : GSN 38, Br 12,400 Gauss  
GSN 50, Br 14,000 Gauss

Temperature : max 80 °C  
(to 180 °C for the special model)



*A sanitary filter for deferrising fruit juices.*



*A double sanitary filter for deferrising ketchup*



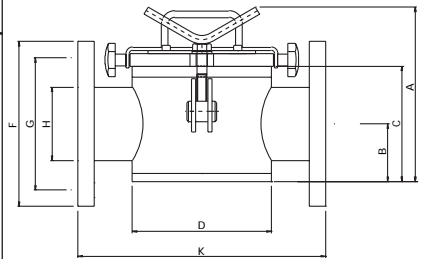
# INDUSTRIAL MAGNETIC FILTER



## Cleaning

Industrial magnetic filters are available with passage widths from DN 50 to DN 400 and are cleaned manually. After opening the lid, the magnetic bars can be removed from the product flow as a single unit. You can then remove the bars from the stainless steel extractor case and let the iron fall out. Given that the weight of the lid (plus the magnets attached) exceeds a critical limit with larger passage widths, the followers from passage width DN 150 and beyond are fitted with lateral guides

| Industrial filter | A     | B   | C   | D     | F   | G   | H     | K   | number of bars |
|-------------------|-------|-----|-----|-------|-----|-----|-------|-----|----------------|
| SSFN005038        | 186   | 50  | 121 | 114,3 | 165 | 125 | DN 50 | 230 | 4              |
| SSFN006538        | 186   | 60  | 121 | 114,3 | 185 | 145 | DN 65 | 230 | 4              |
| SSFN008038        | 211,5 | 70  | 140 | 168,3 | 200 | 160 | DN 80 | 300 | 7              |
| SSFN010038        | 236   | 80  | 165 | 168,3 | 220 | 180 | DN100 | 300 | 7              |
| SSFN012538        | 265   | 100 | 195 | 168,3 | 210 | 250 | DN125 | 300 | 7              |
| SSFN015038        | 720   | 104 | 226 | 219,1 | 240 | 295 | DN150 | 360 | 9              |
| SSFN020038        | 720   | 140 | 285 | 273   | 340 | 295 | DN200 | 460 | 11             |
| SSFN025038        | 830   | 160 | 325 | 325   | 395 | 350 | DN250 | 500 | 13             |



Magnetic filter in pneumatic transport pipeline for filling storehouses like e.g. for sugar, soy, flour, plastics, spices etc.

## Technical data:

Magnets : Neoflux® GSN 38  
 Br value : 12,400 Gauss  
 Alternative : GSN50  
 Br value : 14,000 Gauss  
 Casing : All stainless steel 316  
 Flanges : DIN 2576 PN 10  
 Working pressure : 10 bars, testing pressure: 15 bars  
 Temperature : Standard 80 °C,  
 (to 200 °C for the special model)

Industrial filter in a pneumatic conveying system, used for deferrising flour.

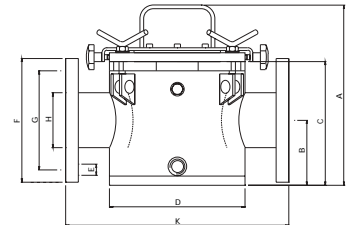


# DOUBLE-WALLED INDUSTRIAL MAGNETIC FILTER

Double-walled filters are specially geared to the removal of ferrous particles from products that tend to coagulate, such as chocolate. The industrial filters used for this purpose are fitted with a double wall to allow a continuous flow of hot water so that the product stays liquid. Double-walled filters are cleaned just like ordinary industrial filters and tolerate a maximum pressure of 5 bar (3 bar in the case of hot water).



| Industrial filter | A   | B   | C   | D     | E         | F   | G     | H     | K   | number of bars |
|-------------------|-----|-----|-----|-------|-----------|-----|-------|-------|-----|----------------|
| SSFD005038        | 229 | 99  | 164 | D 168 | D 18 (4x) | 165 | D 125 | DN50  | 300 | 5              |
| SSFD006538        | 234 | 99  | 164 | D 168 | D 18 (4x) | 185 | D 145 | DN65  | 300 | 5              |
| SSFD008038        | 280 | 105 | 189 | D 219 | D 18 (8x) | 200 | D 160 | DN80  | 360 | 7              |
| SSFD010038        | 280 | 109 | 189 | D 219 | D 18 (8x) | 220 | D 180 | DN100 | 360 | 7              |



Magnetic filters used in chocolate production processes.



A double-walled magnetic filter is specially designed for products that tend to coagulate, such as chocolate.

# SANITARY MAGNETIC FILTER



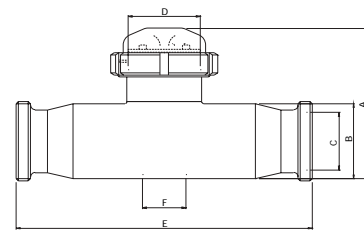
## Model

Sanitary magnetic filters are available with passage widths from DN 25 to DN 125. Sanitary filters are cleaned manually just like ordinary industrial filters. The lid comes with a special stainless steel protective hood. The casing is suitable for applications in the food industry.

## Technical data:

Magnets : Neoflux® GSN38  
 Br value : 12,400 Gauss  
 Alternative : GSN 50  
 Br value : 14,000 Gauss  
 Casing : Complete stainless steel 316  
 Flanges : DIN 11850  
 Working pressure : 3 bar, testing pressure 5 bar  
 Temperature : Standard 80 °C,  
 (up to 200 °C for the special model)

| Sanitary filter | A   | B   | C     | D     | E   | F    | number of bars |
|-----------------|-----|-----|-------|-------|-----|------|----------------|
| SSF004038       | 175 | 85  | NW 40 | NW 80 | 426 | D 50 | 3              |
| SSF005038       | 175 | 85  | NW 50 | NW 80 | 410 | D 50 | 3              |
| SSF006538       | 175 | 85  | NW 65 | NW 80 | 330 | D 50 | 3              |
| SSF008038       | 210 | 104 | NW 80 | NW100 | 410 | D 60 | 4              |
| SSF010038       | 235 | 129 | NW100 | NW125 | 508 | D 80 | 5              |
| SSF012538       | 265 | 154 | NW125 | NW150 | 500 | D100 | 7              |



## Double filter

The use of a double filter system provides extra security. The first filter removes all metallic particles and the second checks the product for any residues. This system is particularly common in food companies, where quality of the end product is a major priority in the light of tightened HACCP requirements.  
 (see pictures page 3)



Filter with special wire for extracting iron from course products.



Magnetic filter in pneumatic transport pipeline removes Fe particles from milkpowder.

# PHARMA MAGNETIC FILTER

## Technical data:

|                  |  |
|------------------|--|
| Magnets          | : Neoflux® GSN38                                       |
| Br value         | : 12,400 Gauss   |
| Alternative      | : GSN50  |
| Br value         | : 14,000 Gauss   |
| Casing           | : All stainless steel 316                              |
| Flanges          | : ferrule  |
| Working pressure | : 3 bar, testing pressure 5 bar                        |
| Temperature      | : Standard 80°C (up to 200°C for the special model)    |
| Finish           | : Casing fully polished without any "dead specks"      |
| Application      | : In processes subject to strict sanitary requirements |



| Pharma filter | A   | B  | D   | E   | F    | G     | K   | number of bars |
|---------------|-----|----|-----|-----|------|-------|-----|----------------|
| SSFJ004038    | 165 | 23 | 103 | 120 | 50,5 | 1,5 S | 275 | 5              |
| SSFJ005038    | 165 | 23 | 103 | 120 | 64   | 2 S   | 275 | 5              |
| SSFJ006038    | 165 | 36 | 103 | 120 | 77,5 | 2,5 S | 275 | 5              |
| SSFJ007038    | 179 | 38 | 112 | 144 | 91   | 3 S   | 280 | 7              |
| SSFJ010038    | 221 | 64 | 150 | 168 | 119  | 4 S   | 290 | 7              |

# SELF-CLEANING MAGNETIC FILTERS FOR LOTS OF IRON OR PLACES DIFFICULT TO ACCESS

The Goudsmit Neoflux® self-cleaning magnetic filter removes (extremely small) ferrous particles from liquid product flows. They are used, for example, in the chemical industry for deferrising pigments or varnishes, and in the ceramics industry for "cleaning" the glaze and preventing "black specks".

## Reiniging

Self-cleaning magnetic filters are cleaned on the basis of a PLC-controlled pneumatic system. For cleaning purposes, automatic valves ensure that both the filter input and output are locked. Another valve in the bottom of the filter then opens to allow the liquid to flow out of the filter container.

At the same time the magnetic cores inside the stainless steel tubes are blown upwards, out of the container. With the magnets in this position, there is no magnetic field and the ferrous particles are released. The stainless steel tubes are cleaned with a fine ultra-effective cleaning spray. After the cleaning process the magnetic filters re-enter the container, the drainage valve is closed and the filter input and output are opened. The entire cleaning cycle takes only 15 seconds.



*The selfcleaning magnetic filter can be used when lots of Fe particles are to be expected. It saves time and money.*



# MAGNETIC FILTER WITH METAL DETECTOR

If the product contains non-magnetic components, we recommend installing a metal detector. This instrument detects metal particles and is connected to a valve which ensures the disposal of that part of the product that contains metals, without any interruption of the pressure or the production process. The disposal mechanism is designed to allow easy cleaning.

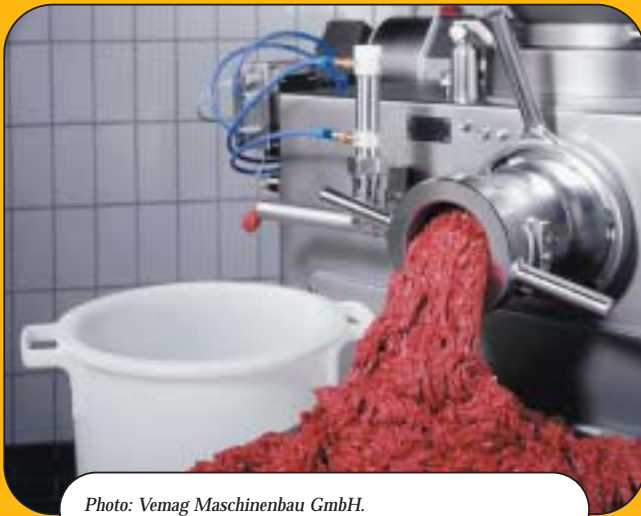


Photo: Vemag Maschinenbau GmbH.



Detection of margarine.

If the product has a high metal content, a detector alone will not suffice. We recommend installing a filter to prevent product loss, product liability problems and the loss of expensive packed products. (see photograph)



Metal detector on a support, used for the removal of non-magnetic particles.

**Teamwork between three divisions**  
Behind the Goudsmit Group stand the divisions where various disciplines are housed. They are ready to supply fitting answers to all your questions about magnets.



ISO gecertificeerd:  
Nr. 653438

**GOUDSMIT**  
magnetic systems

P.O. Box 18 5580 AA Waalre, The Netherlands  
Telephone +31 (0)40 221 32 83 Fax +31 (0)40 221 73 25 E-mail: systems@goudsmit-magnetics.nl  
www.goudsmit-magnetics.nl